

THOR[®] – jaw and cone crusher liners made from inoculated austenitic manganese steel

Game-changing solution

THOR[®] steel jaw and cone crusher liners allow end users to cut their costs in two ways. First, a straightforward lining expenses reduction is obtained with a smaller annual consumption of liner sets. Second, due to longer achieved operating time less equipment downtime for liner changeout is required.

Upgraded casting technology

Complex inoculation process we use allows forming unique crystallization conditions for manganese steels. We obtain fine-grained microstructure that supports higher strength of castings. Combined with in-ladle removal of tramp elements and non-metallic inclusions this gives THOR[®] castings higher tensile strength, better abrasion resistance, and longer overall lifetime compared to regular liners.

Advantages of THOR[®] liners:



Longer
product lifetime

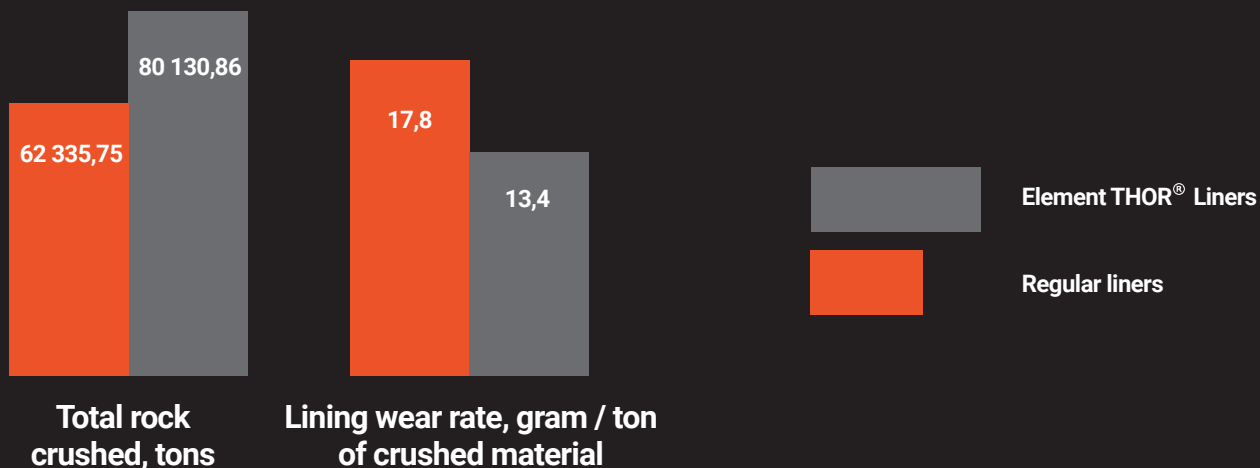


Lower
production costs



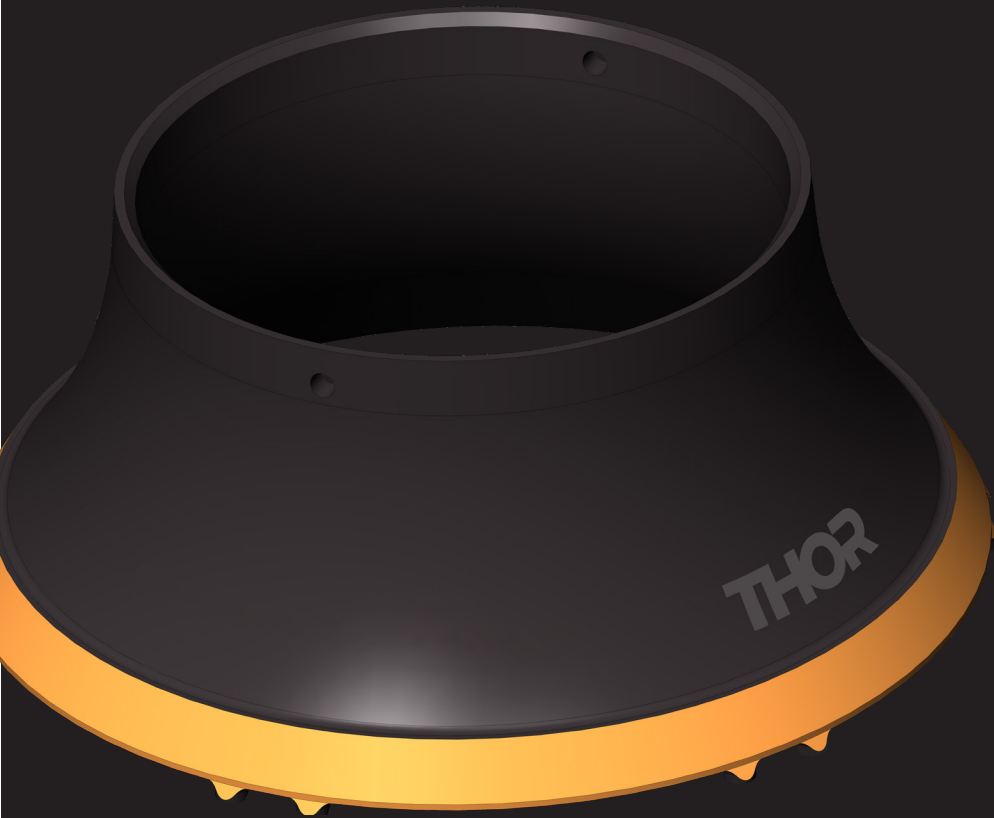
Reduced number
of maintenance outages

Test results*:



* Based on trials of 6 sets of THOR[®] cone medium coarse crusher liners in 2019.

element[®]
Integrity in details
www.element.global



Element Group Oy

Address: Yrittäjänkulma 5

33710 Tampere

Phone: +358 40 820 6149

Email: info@element.global